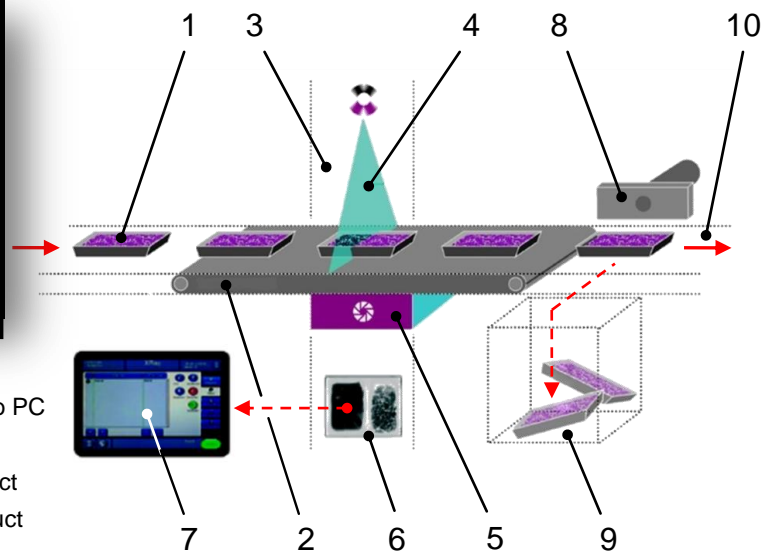




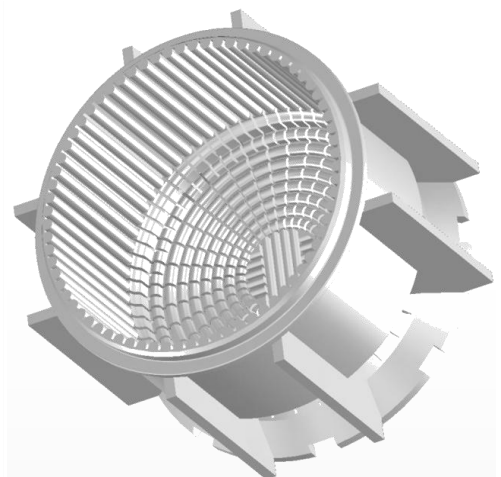
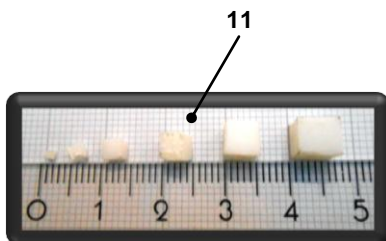
Sales Update 4/2016

Cheese Moulds of Froma[®]

Increased product safety - detectability of pieces with standard X-Ray machines



- | | |
|----------------------------|-----------------------|
| 1. Product | 7. Transmission to PC |
| 2. Conveyor | 8. Pusher |
| 3. X-Ray tube | 9. Rejected product |
| 4. X-Ray | 10. Accepted product |
| 5. High performance camera | 11. Particle form |
| 6. X-Ray picture | |



Sample

Summary:

- Trials on standard X-Ray machines show, that particles of Froma[®] material are detected with high reliability.
- Particles larger than 2mm were reliably detected in all reference products.
- No influence on performance and lifetime of the cheese moulds.
- Production with existing injection moulding tools.

Contact Person:

For further information or references please contact

Mr. Andreas Blin
 Tel: +49 8039/401-205
 E-Mail: andreas.blin@alpma.de